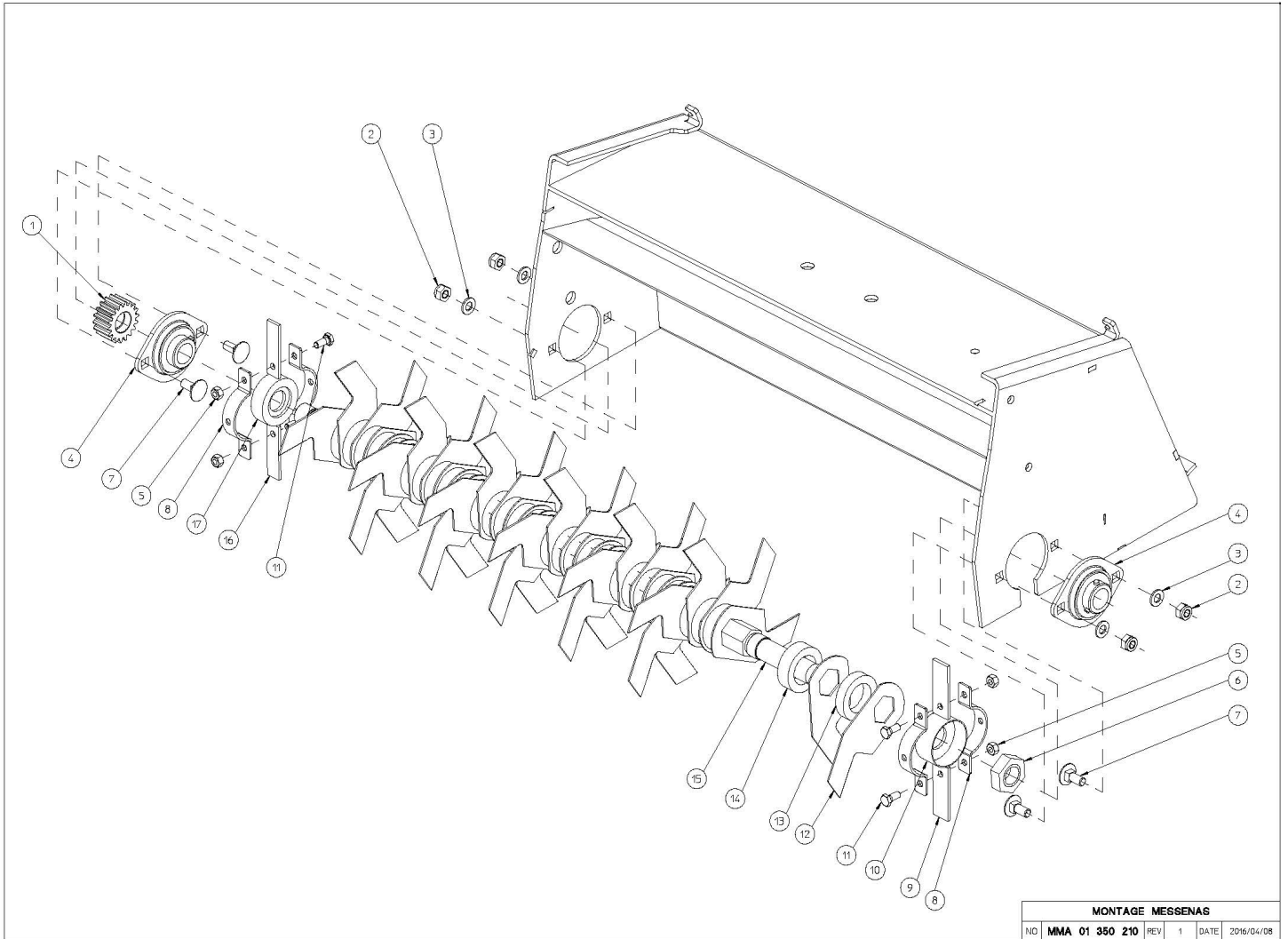


E-600-C -EVOLUTION 2016-2017						
NO	MMA 01 350 200	REV	1	DATE	2016/10/05	

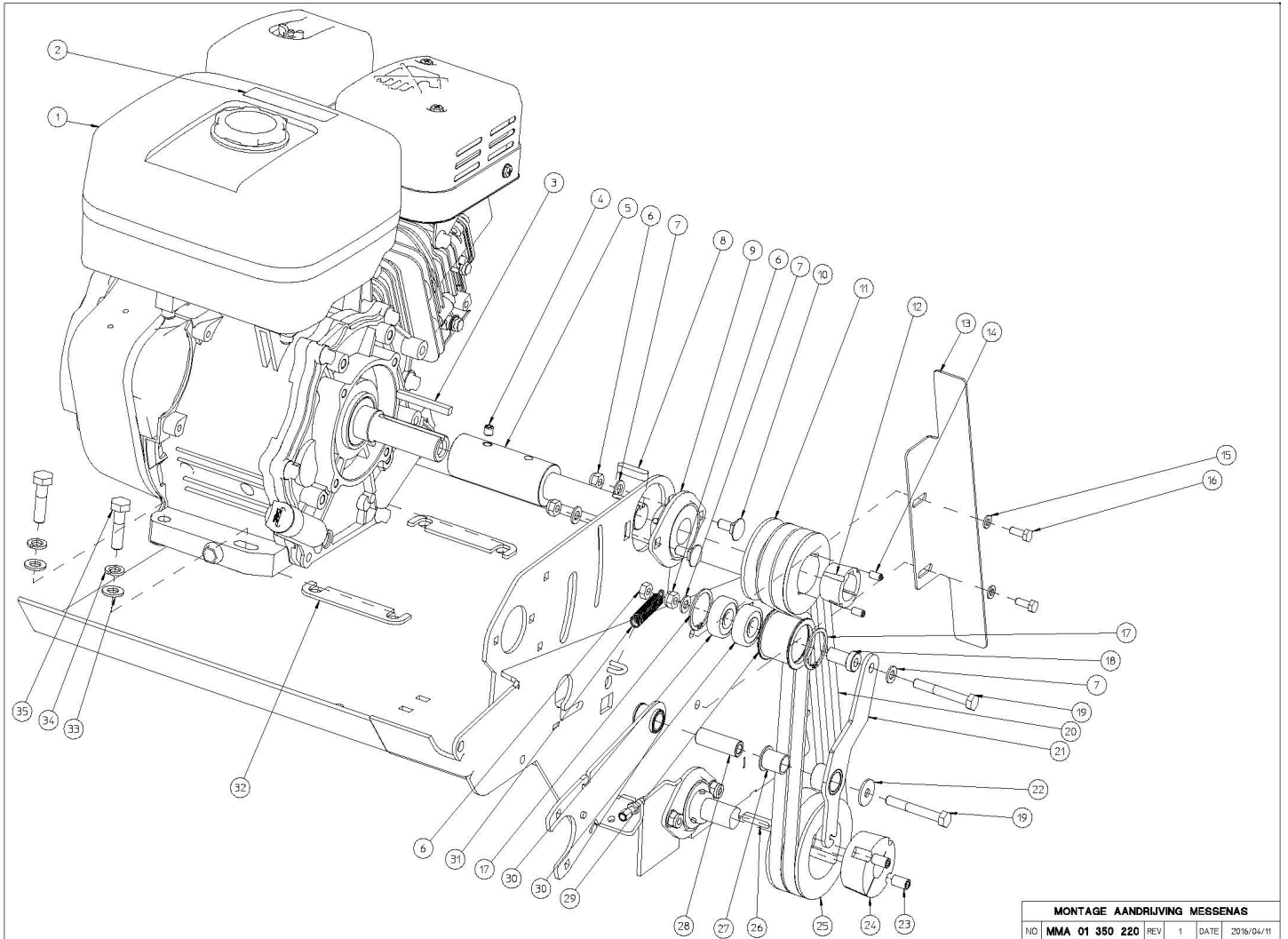
#	Order nr	article description	quantity
1	MMA 01 350 210	bladeshaft	1
2	MMA 01 350 220	drive bladeshaft	1
3	MMA 01 350 230	drive tractionroll	1
4	MMA 01 350 240	fixed transfer rolls	1
5	MMA 01 350 250	hinged transfer rolls	1
6	MMA 01 350 260	transmission conveyer	1
7	MMA 01 350 270	chassis	1
8	MMA 01 350 280	option	1

# E600 COMPACTOR - 2016 - BLADESHAFT



#	Order nr	article description	quantity
1	BA 602 001 801	gear m2 18t	1
2	BS 502 000 800	self locking nut m8 din 985	2
3	BS 531 000 800	washer m8 din 125	2
4	BL 801 102 002	bearing + flanges ucpfl 204	1
5	BS 502 000 600	self locking nut m6 din 985	2
6	BS 501 902 200	nut m22x1.50 din 439	1
7	BS 554 100 820	bolt m8x20 din 603	2
8	MPA 01 350 505	clamp strap	2
9	BR 901 205 503	vane 80 shore dzc550	2
10	MPA 01 350 070	support disc ring blades	1
11	BS 512 000 614	bolt m6x14 din 933	2
12	BU 402 300 105		1
13	BR 111 291 010	nylon bushing (28.5/44x10)	1
14	BR 111 291 410	nylon bushing (28.5/44x14)	34
15	MPA 01 350 335	bladeshaft	1
16	BR 901 200 503	vane 80 shore e600 compactor	2
17	MPA 01 350 075	support disc ring blades	1

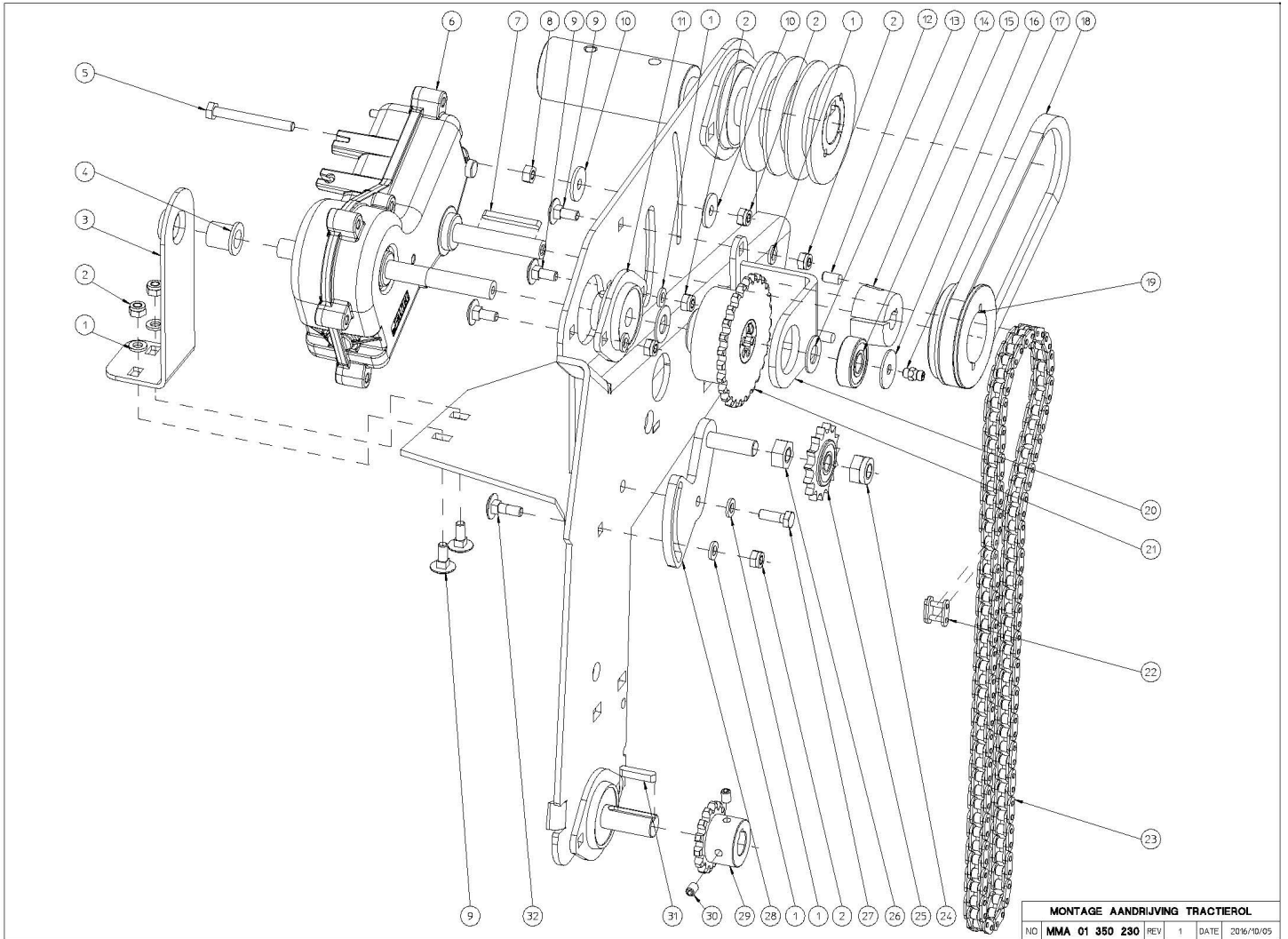
# E600 COMPACTOR - 2016 - DRIVE BLADESHAFT



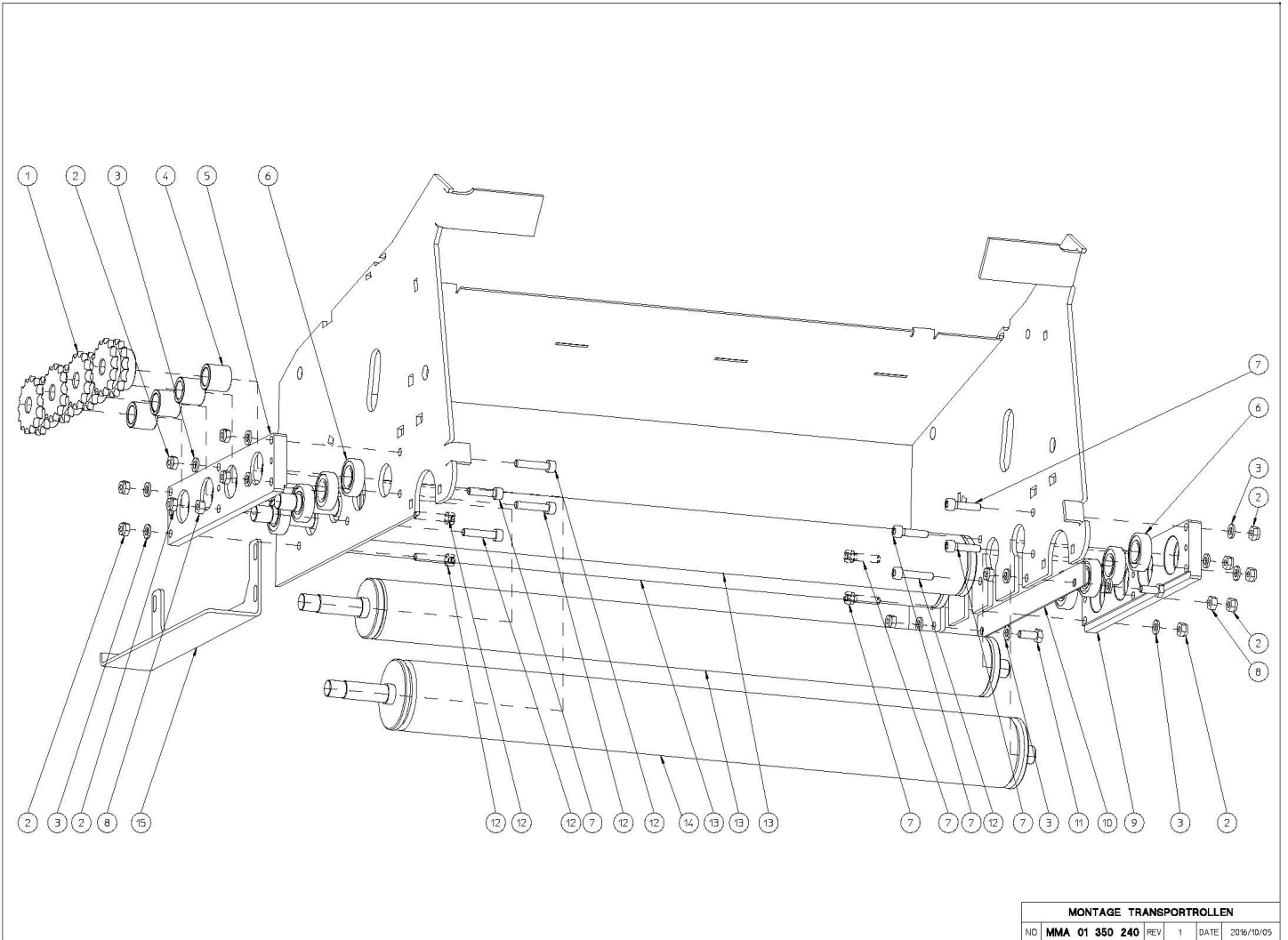
MONTAGE AANDRIJVING MESSENAS				
NO	MMA 01 350 220	REV	1	DATE 2016/04/11

#	Order nr	article description	quantity
1	BM 204 109 000	subaru ex27	1
2	BQ 505 010 020	sticker max 2800 rpm 90x25	1
3	BB 342 060 657	key 6.35x6.35x57 din 6880	1
4	BS 023 000 808	set screw m8x8 din 916	1
5	MPA 01 350 125	extention engineshaft	1
6	BS 502 000 800	self locking nut m8 din 985	2
7	BS 531 000 800	washer m8 din 125	1
8	BB 351 080 732	key 8x7x32 din 6885a	1
9	BL 801 102 500	bearing + flanges aspfl 205	1
10	BS 554 100 820	bolt m8x20 din 603	2
11	BA 562 707 130	pulley spa iii 71 tl1108	1
12	BB 501 112 500	taper lock tl 1108-25	1
13	MPA 01 350 580		1
14	BB 501 306 130	set screw 1/4"x1/2"	2
15	BS 531 000 600	washer m6 din 125	2
16	BS 512 000 616	bolt m6x16 din 933	2
17	BB 002 000 370	retaining ring 32 din 472	1
18	MPA 01 350 040	spacer belt tightener galvanized	1
19	BS 511 000 844	bolt m8x60 din 931	1
20	BA 527 709 140		2
21	MPA 01 350 570		1
22	BS 532 008 254	washer m8x25x2	1
23	BB 501 310 160	set screw 3/8"x5/8"	2
24	BB 501 132 000	taper lock tl 1610-20	1
25	BA 562 709 021	pulley spa ii 90 tl1610	1
26	BB 351 060 630	key 6x6x30 din 6885a	1
27	BR 112 152 100	nylon bushing with collar (15.4/18/23x21/1)	1
28	MPA 01 350 575		1
29	MPA 01 350 030	pressure roller belt tightener	1
30	BL 001 203 703	bearing 6301 2rz	1
31	BV 011 011 005	spring 1x11x55	1
32	MPA 01 420 445		2
33	BS 531 001 000	washer m10 din 125	4
34	BS 533 001 000	lock washer m10 din 127b	4
35	BS 511 001 040	bolt m10x40 din 931	4

# E600 COMPACTOR - 2016 - DRIVE TRACTIONROLL



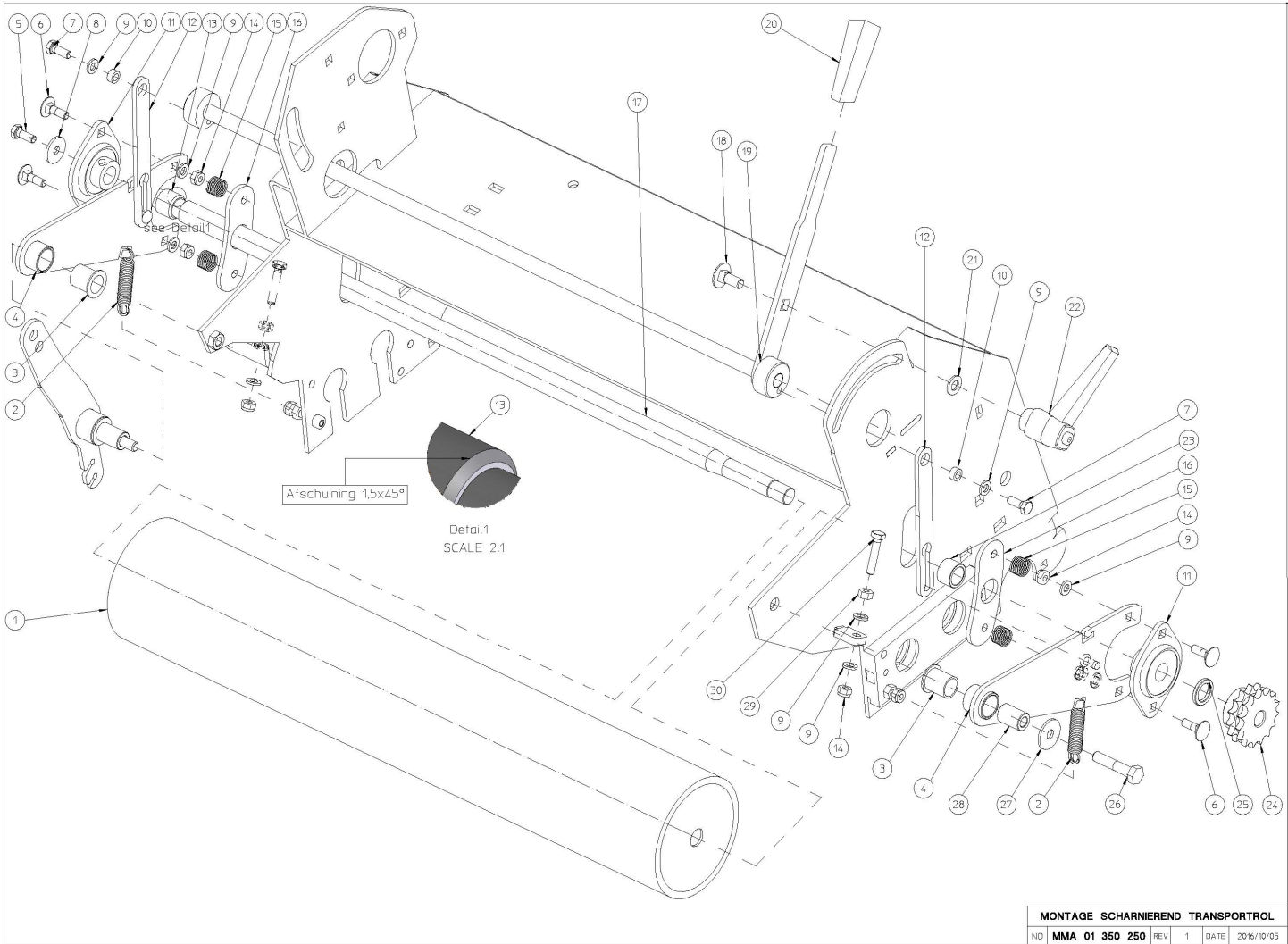
# E600 COMPACTOR - 2016 - FIXED TRANSFER ROLLS



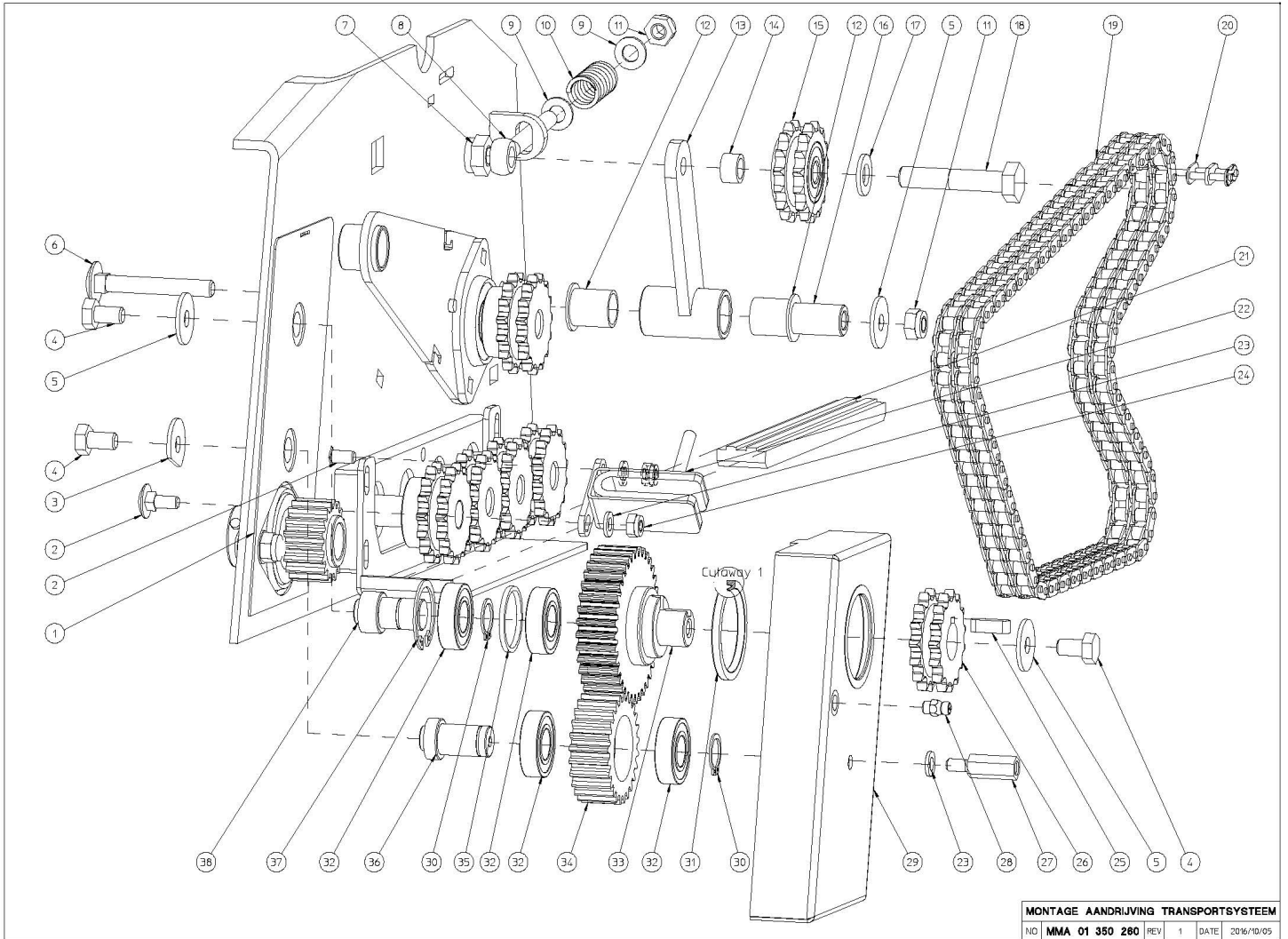
MONTAGE TRANSPORTROLLEN				
NO	MMA 01 350 240	REV	1	DATE 2016/10/05




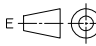
# E600 COMPACTOR - 2016 - HINGED TRANSFER ROLLS

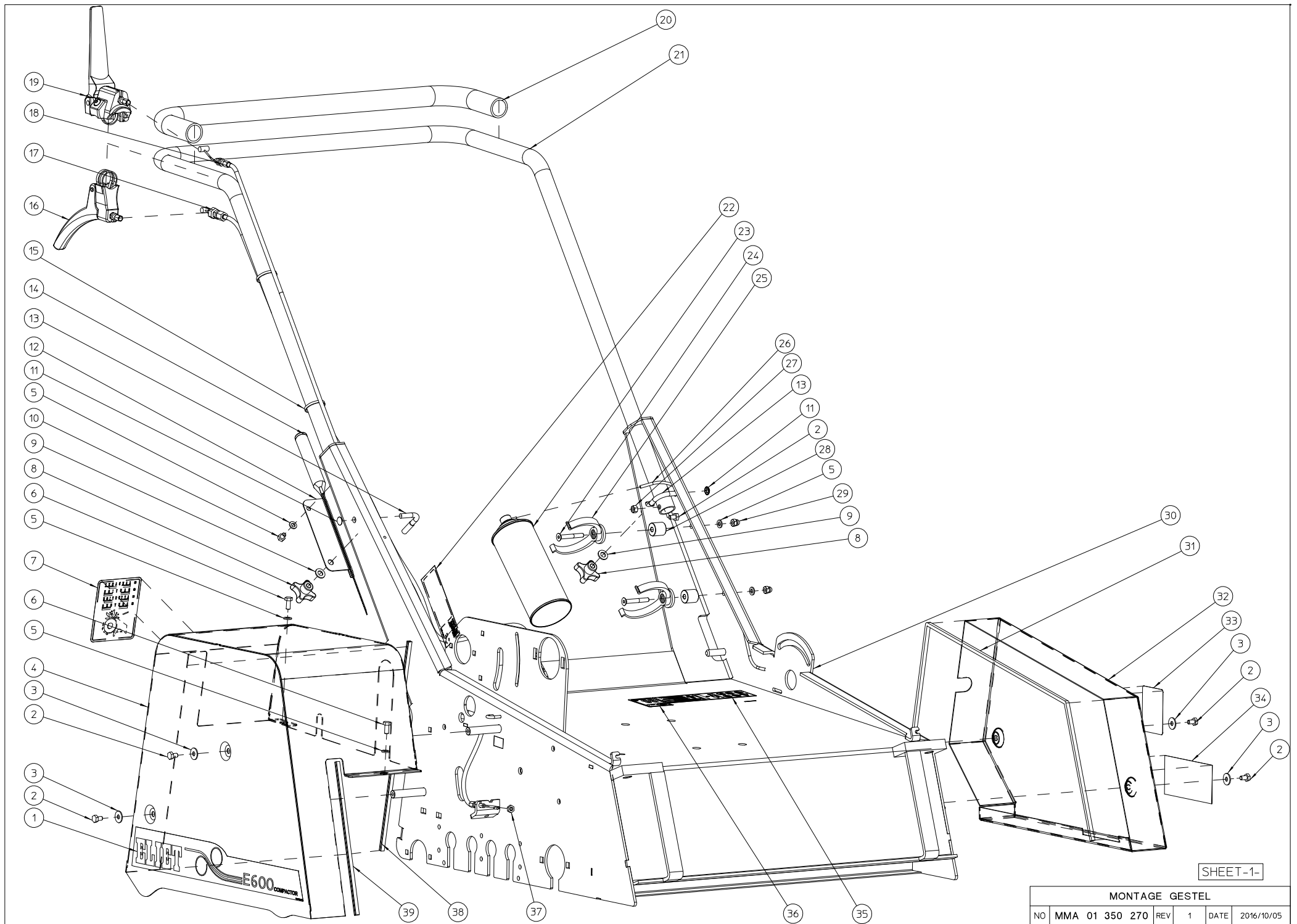


# E600 COMPACTOR - 2016 - TRANSMISSION CONVEYOR



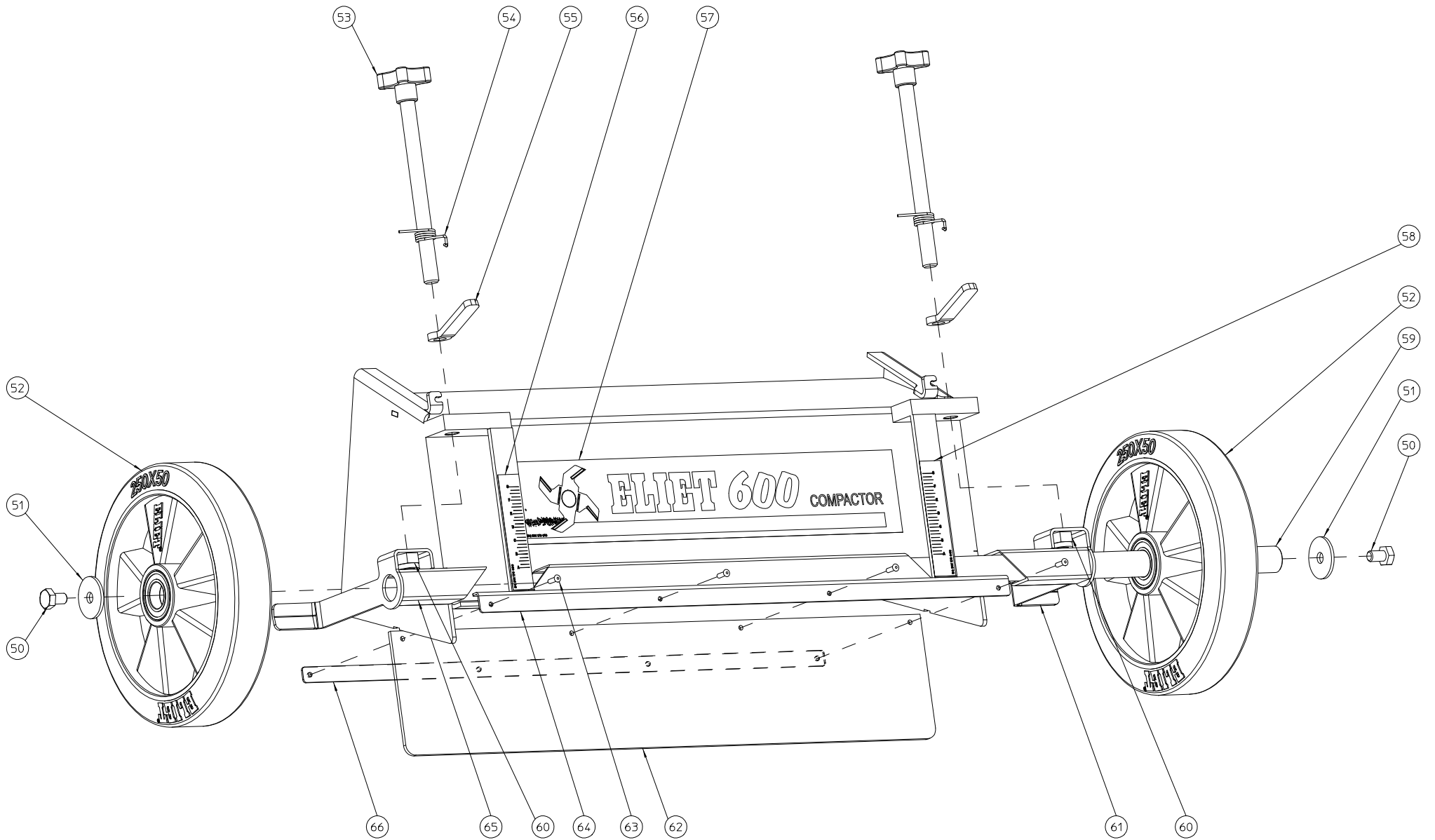
Pos	Qté	Nom	Description
1	2	BQ 501 170 020	KLEVER AFSCHEMING E-600 C
2	6	BS 512 000 610	DIN 933 VIS M6X10
3	4	BS 532 006 183	RONDELLE DE CARROSSERIE M6X18X1.5 DIN 440
4	1	MPA 01 350 620	AFSCHEMING AANDRIJVING
5	17	BS 531 000 600	DIN 125 RONDELLE M6
6	2	BS 512 000 614	DIN 933 VIS M6X14
7	1	BQ 505 010 130	AUTOCOLLANT SECURITE 100X80 (COURROIE)
8	2	BN 630 808 400	BOUTON CRANTES OUVERT M8
9	6	BS 531 000 800	DIN 125 RONDELLE M8
10	1	BS 512 000 608	DIN 933 VIS M6X8
11	2	BB 011 000 070	STARLOCK 7MM-RVS
12	1	MPA 01 350 605	HOUDER ROLREINIGER
13	2	MPA 01 420 095	STUUR SPANKLEM
14	1	MPA 01 350 495	ROLREINIGER
15	2	BE 043 010 140	COLSON 140 X 3.5 NOIR
16	1	BN 332 500 350	HANDEL SACCON LABD7B03 STROKE 30 KLEM 25
17	1	BK 153 181 220	BEDIENINGSKABEL TRACTIEROL
18	1	BK 153 181 460	BEDIENINGSKABEL AANDRIJVING MESSEN
19	1	BN 332 500 140	DODEMANSHANDEL SACCON-LASC55R01T STROKE 25-KLEM 25 MM
20	1	BN 231 002 073	SOFT GRIP-SCHLAUG TP/K 24.5X3X730MM-BLACK
21	1	MPA 01 350 610	STUURBUIS
22	1	BQ 505 010 010	AUT.ELIET CE 120X30
23	1	BX 900 110 010	MOPIT KETTINGSPRAY 400 ML
24	2	BS 522 100 641	DIN 7991 VIS A TETE FRAISEE M6X45
25	2	BT 653 006 300	BEUGEL TYPE LYRE 63MM
26	1	BH 646 060 040	FESTO FE SLANG BLAUW PUN-4X0.75-BL 0,6M
27	14	BS 502 000 600	DIN 985 ECROU NYLON M6
28	2	BR 111 200 600	AFSTANDBUS 6.5X20X20
29	2	BS 505 800 600	DIN 986 ECROU NYLON A TETE RONDE M6
30	1	MPA 01 350 595	GESTEL
31	1	BR 000 910 930	MU-PROFIEL REF.U1 E 600-93 CM
32	1	MPA 01 350 615	AFSCHEMING AANDRIJVING ROLLEN
33	1	BQ 505 010 370	AUTOCOLLANT SECURITE 70X56 (COURROIE)
34	1	BQ 501 010 020	AUT.ELIET 130X60
35	1	BQ 505 010 171	AUTOCOLLANT DE SECURITE
36	1	BQ 505 112 098	AUT. DECIBEL 98 DB
37	1	BS 501 900 600	DIN 439 1/2 ECROU M6
38	1	BR 000 910 340	RUBBERPROFIEL 34CM
39	1	BR 000 910 230	MU-PROFIEL.REF.U1 E600-23,8 CM
40	1	MPA 01 350 600	OPVANGBAK
41	2	BN 230 300 100	POIGNEE
42	4	BS 521 100 820	DIN 912 VIS UMBRACO M8X20
43	4	BS 502 000 800	DIN 985 ECROU NYLON M8
44	12	BS 554 100 616	DIN 603 VIS A BOIS M6X16
45	2	BL 801 101 500	PALIER COMPLET ASPFL 202
46	1	MPA 01 350 515	BERUBBERDE TRACTIEROL
47	1	MPA 01 350 485	SCHRAPPLAAT ROL Ø 60
48	1	MPA 01 350 245	OPSPANLAT SCHRAPER TRACTIEROL
49	1	BR 910 000 740	NYLONPLAAT SCHRAPPEN TRACTIEROL
50	2	BS 512 001 016	DIN 933 VIS M10X16
51	2	BS 532 010 406	RONDELLE DE CARROSSERIE M10X40X3
52	2	BW 325 025 000	ROUE ALUMINIUM 250/60-100
53	2	BN 630 214 575	STERKNOP 189-60M14X175
54	2	BV 909 000 030	RESSORT DE TORSION
55	2	MPA 01 090 260	LEVIER DE BLOCAGE
56	1	BQ 501 170 030	HOOGTEREGELING-L E-600-C
57	1	BQ 501 170 010	KLEVER ELIET E600-C-445X80
58	1	BQ 501 170 040	HOOGTEREGELING-R E-600-C
59	1	MPA 01 350 120	WIELAS_25
60	2	BS 502 001 400	DIN 985 ECROU NYLON M14
61	1	MPA 01 350 105	STEUN HOOGTEREGELING-L
62	1	BR 900 001 610	RUBBERFLAP
63	4	BB 221 104 140	BLINDLINKNAGEL 3.9X14 ALU/STAAL
64	1	MPA 01 350 115	STEUN RUBBERFLAP
65	1	MPA 01 350 100	STEUN HOOGTEREGELING_R
66	1	MPA 01 350 110	STEUNLAT_RUBBERFLAP

		PROJECT_NR		
MATERIAL_NR	MATERIAL	LENGTH	OVERMAAT	
		0.0		
TITLE		NAME	DATE MODIFIED	
MONTAGE GESTEL		koen	2016/10/05	
		NAME	DATE CREATED	
		koen	2016/05/18	
	 Overall Tol ISO 2768-fH	 Machine E_600_C	FORMAT A4V	SCALE 1:1
	WWW.ELIET.BE ELIET N.V. - Zwevegemstraat 136 - B-8553 OTEGEM Tel.: +32/56/77.70.88 - Fax.: +32/56/77.5213	DRW_NR <b>MMA 01 350 270</b>	REVISION 1	SHEET 4 of 4



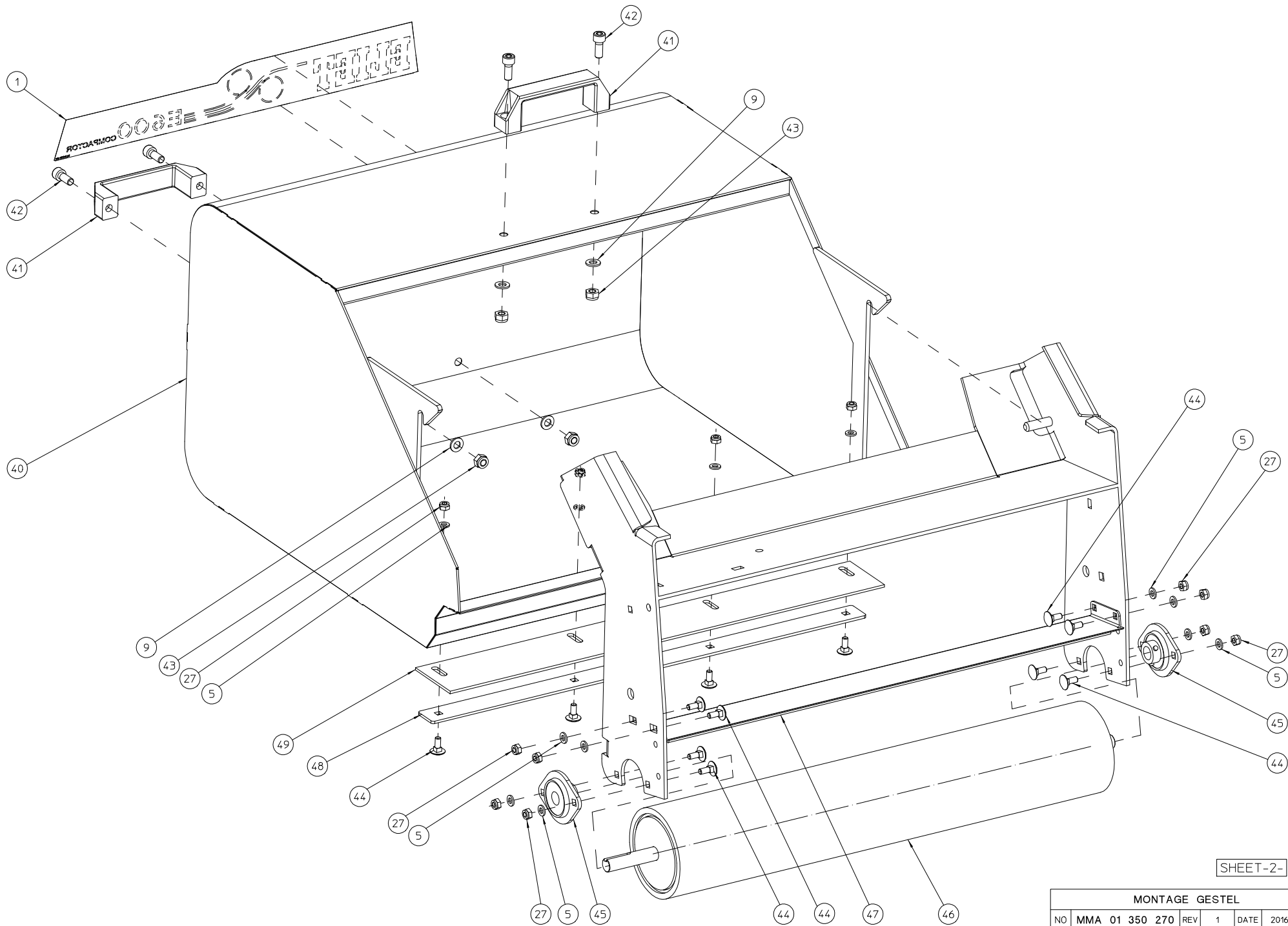
SHEET-1-

MONTAGE GESTEL						
NO	MMA 01 350 270	REV	1	DATE	2016/10/05	



SHEET-3-

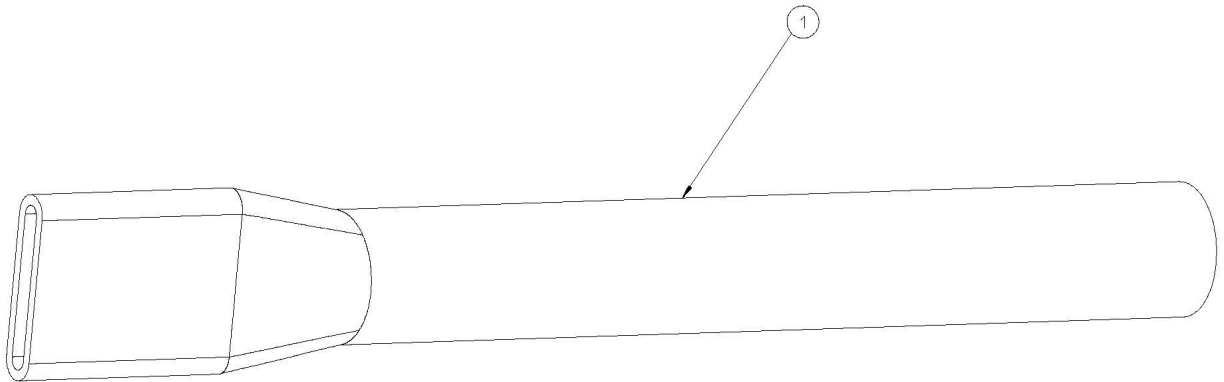
MONTAGE GESTEL						
NO	MMA 01 350 270	REV	1	DATE	2016/10/05	



SHEET-2-

MONTAGE GESTEL						
NO	MMA 01 350 270	REV	1	DATE	2016/10/05	

# E600 COMPACTOR - 2016 - OPTION



Pos	Qté	Nom	Description	OPTIES E-600-C					
1	1	MPA 01 350 625	MES RECHTER	NO	<b>MMA 01 350 280</b>	REV	1	DATE	2016/05/20

#	Order nr	article description	quantity
1	MPA 01 350 625		1